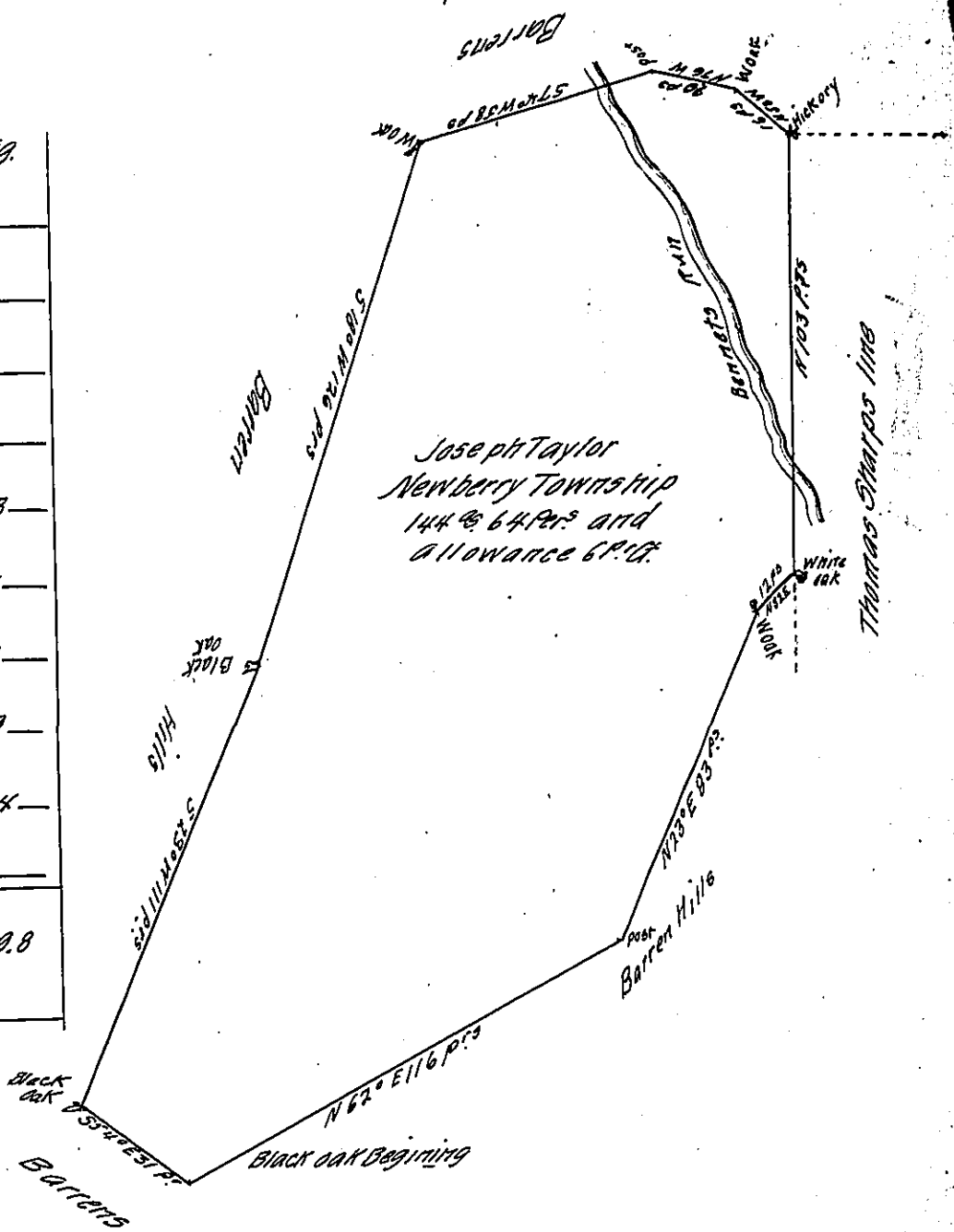


FORM NO 1.

No	C ^o	Course	Dist ^s	Northg	Southg	Eastg	Westg
1	N62E	116	54.4			102.4	
2	N23E	83	76.4			32.4	
3	N52E	12	7.4			9.5	
4	N	103	103				
5	N50W	16	10.3				12.3
6	N76W	20	4.8				19.4
7	S74W	58			16		55.8
8	S18W	126			119.8		38.9
9	S23W	111			102.1		43.4
10	S54E	31			18.2	25.1	
				256.3	256.1	169.4	169.8



A Draught of a tract of Land Situate in Newberry Township York County Surveyed to Joseph Taylor in Pursuance of a Warrant from the Honourable Proprietaries for 100 acres bearing Date August the 4th 1762 Surveyed the 20th of the 9th mo 1764

To Mr. Lukens Surveyor Genl. pr. Wm Matthews.

IN TESTIMONY that the above is a copy of the original remaining on file in the Department of Internal Affairs of Pennsylvania, made conformably to an Act of Assembly approved the 16th day of February, 1833, I have hereunto set my Hand and caused the Seal of said Department to be affixed at Harrisburg, this Twenty-second day of March 1907

Isaac D. Brown
Secretary of Internal Affairs.